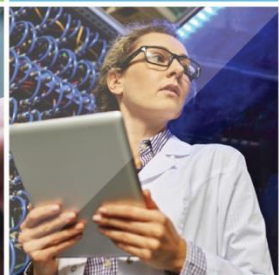
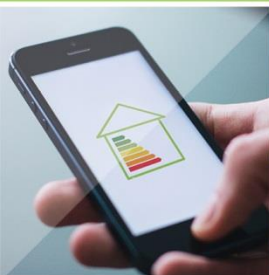




European
Commission



The Clean Energy Package – What's in for Renewables in Heating and cooling?

Vienna, EUFORES IPM, 19th October 2018
Michaela Holl, DG ENERGY, European Commission

EU'S RENEWABLE ENERGY HISTORY

2001

Renewable Electricity Directive

Indicative 22.1% share of renewable **power** in 2010

National **indicative** targets for renewable **electricity**

2009

Renewable Energy Directive - 1

EU-binding target of 20% share of renewable **energy** in 2020

National **binding** targets for renewable **energy** by 2020

2018

Renewable Energy Directive - 2

EU- binding target of 32% share of renewable **energy** in 2030

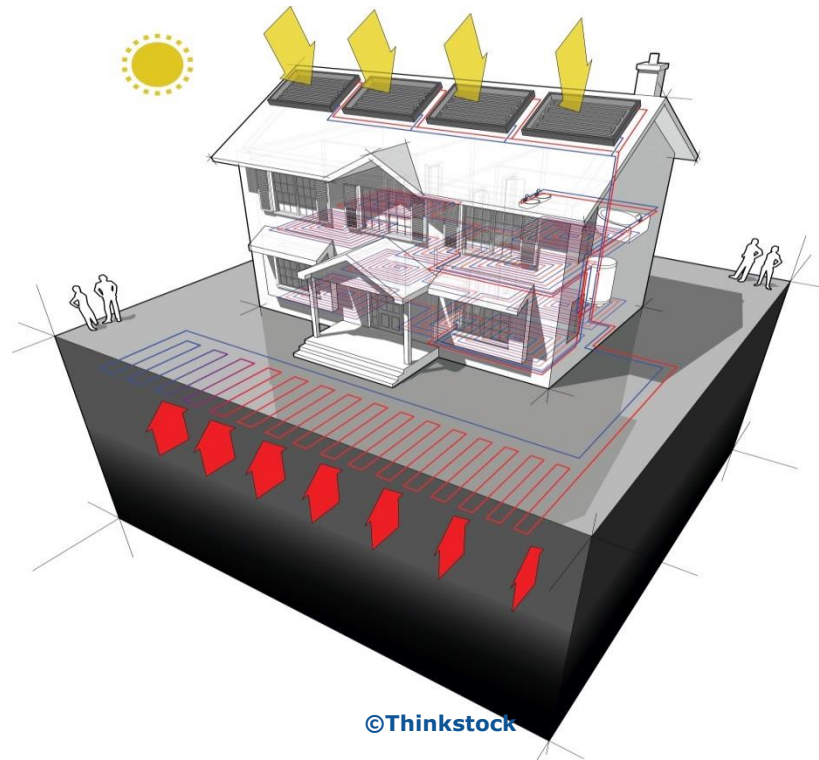
National energy and climate plans with **contribution** in **renewable energy share** to achieve EU- wide target

Indicative formula to assess national contributions

ADDRESSING THE UNTAPPED POTENTIAL OF HEATING & COOLING

- Target to **increase** renewables in heating and cooling by **1.3 percent point per year (2020-2030)**.

A new provision to ensure **mainstreaming of renewables in the sector!**



ADDRESSING THE UNTAPPED POTENTIAL OF HEATING & COOLING

Flexibilities:

- 1.1 instead of 1.3 ppt average annual increase if waste heat cold is not used due to an MS situation
- Flexibilities for MS with:
 - RES share above 60 % and 50-60% share
 - 40% allowance for waste heat/cold
 - high natural gas share
 - High cooling share
 - dispersed settlement structures
- **Illustrative** list of **measures** leaving flexibility for Member States and accessibility
- System of **Guarantees of origin extended to RES heating and cooling**

DISTRICT HEATING AND COOLING

NEW provisions (Article 24):

- *Consumer information*
 - *Disconnection*
 - *1 ppt annual increase in renewables & waste heat/cold (shall endeavour) or*
 - *Third Party Access or Increase by 1 ppt of RES/Waste heat or cold*
 - *Waivers & Exemptions*
-
- ➔ *Key principle: "efficient district heating & cooling" = at least 50% renewable energy or 50% waste heat or 75% cogenerated heat or a 50% combination of such energy and heat*

ENSURING BIOENERGY SUSTAINABILITY

- Reinforced **EU bioenergy sustainability criteria**:
 - *EU criteria extended to cover **large biomass for heat/cooling and power***
 - *New risk-based criteria for **agricultural and forest biomass***
 - *New biomass-based heat and power plants need to deliver at least 70% (80% in 2026) fewer GHG emissions than the fossil fuel alternative;*
 - **Waste hierarchy principle**
- Member States are allowed introduce **more stringent sustainability criteria for solid biomass and biogas**



**THANKS A LOT FOR YOUR
ATTENTION!**

