



NATIONALMUSEUM

27 oktober 2023

Nationalmuseum founded **1792**

Building completed **1866**

Architect **Friedrich August Stüler / Wilhelm Scholander**

National Heritage **1936**

Work **2012 – 2018**

Client **The National Property Board (SFV)**

Area **Gross area 20 000 sqm / Exhibition 15 000 sqm**



Wingårdh Architects and Wikerstål Architects were jointly commissioned to plan the comprehensive renovation of Nationalmuseum in 2012 and the following year the building closed for the start of construction.

2018 the museum was re-opened

The project brief

The project brief was to create an enduringly functional museum by:

The project brief

The project brief was to create an enduringly functional museum by:

Reclaiming opportunities for daylight and views to the exterior

The project brief

The project brief was to create an enduringly functional museum by:

Reclaiming opportunities for daylight and views to the exterior

Claiming for public use several areas that had previously been used for internal activities

The project brief

The project brief was to create an enduringly functional museum by:

Reclaiming opportunities for daylight and views to the exterior

Claiming for public use several areas that had previously been used for internal activities

Improving the logistics through alternative circulation patterns for the public and separate and secure routes for the art

The project brief

The project brief was to create an enduringly functional museum by:

Reclaiming opportunities for daylight and views to the exterior

Claiming for public use several areas that had previously been used for internal activities

Improving the logistics through alternative circulation patterns for the public and separate and secure routes for the art

Replacing and augmenting all technical systems -the middle level had no climate control system at all and the upper level needed a new one

The project brief

The project brief was to create an enduringly functional museum by:

Reclaiming opportunities for daylight and views to the exterior

Claiming for public use several areas that had previously been used for internal activities

Improving the logistics through alternative circulation patterns for the public and separate and secure routes for the art

Replacing and augmenting all technical systems -the middle level had no climate control system at all and the upper level needed a new one

Having a long term perspective of efficiency, operational, economical and environmental

The project brief

The project brief was to create an enduringly functional museum by:

Reclaiming opportunities for daylight and views to the exterior

Claiming for public use several areas that had previously been used for internal activities

Improving the logistics through alternative circulation patterns for the public and separate and secure routes for the art

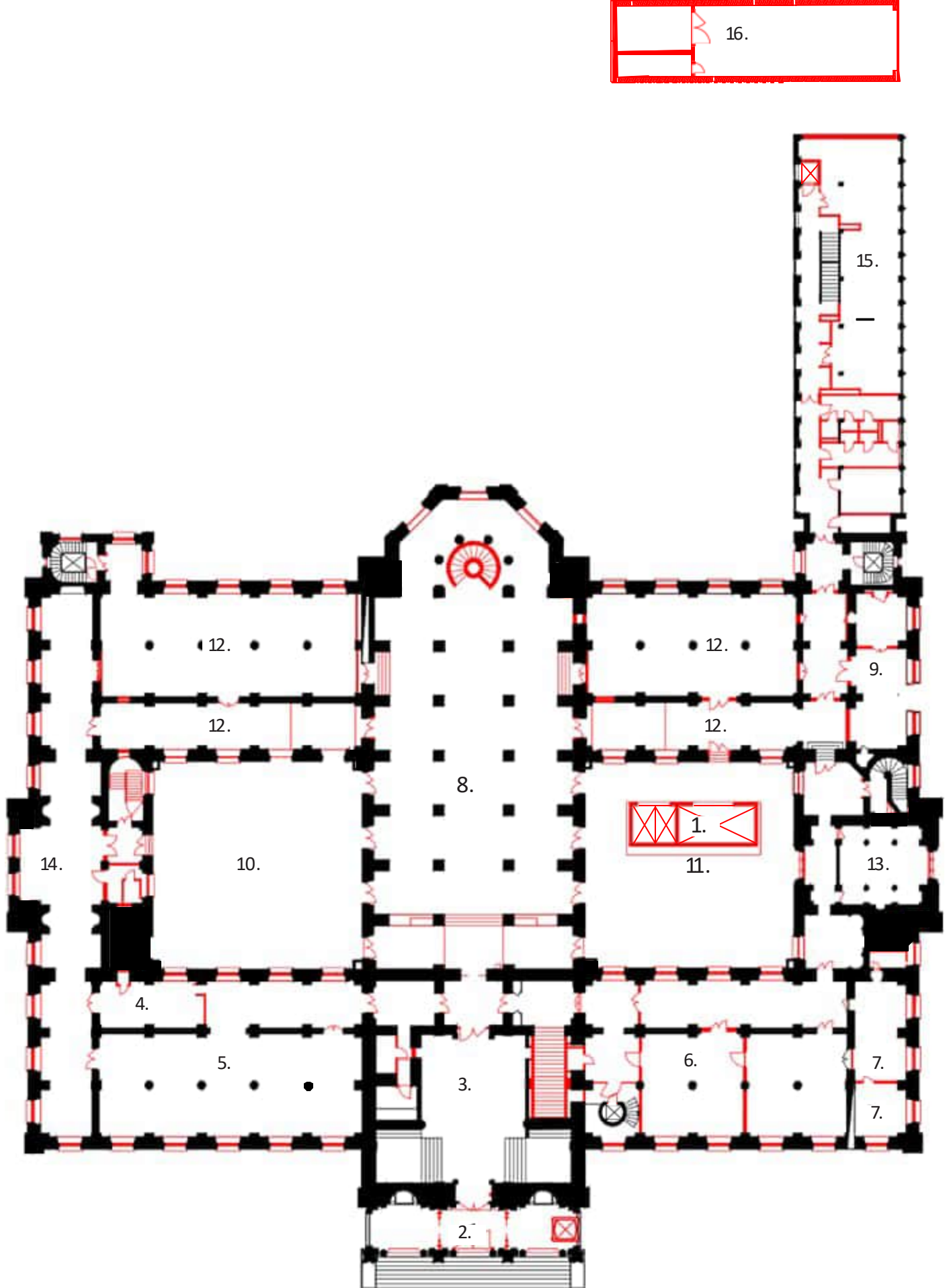
Replacing and augmenting all technical systems - the middle level had no climate control system at all and the upper level needed a new one

Having a long term perspective of efficiency, operational, economical and environmental

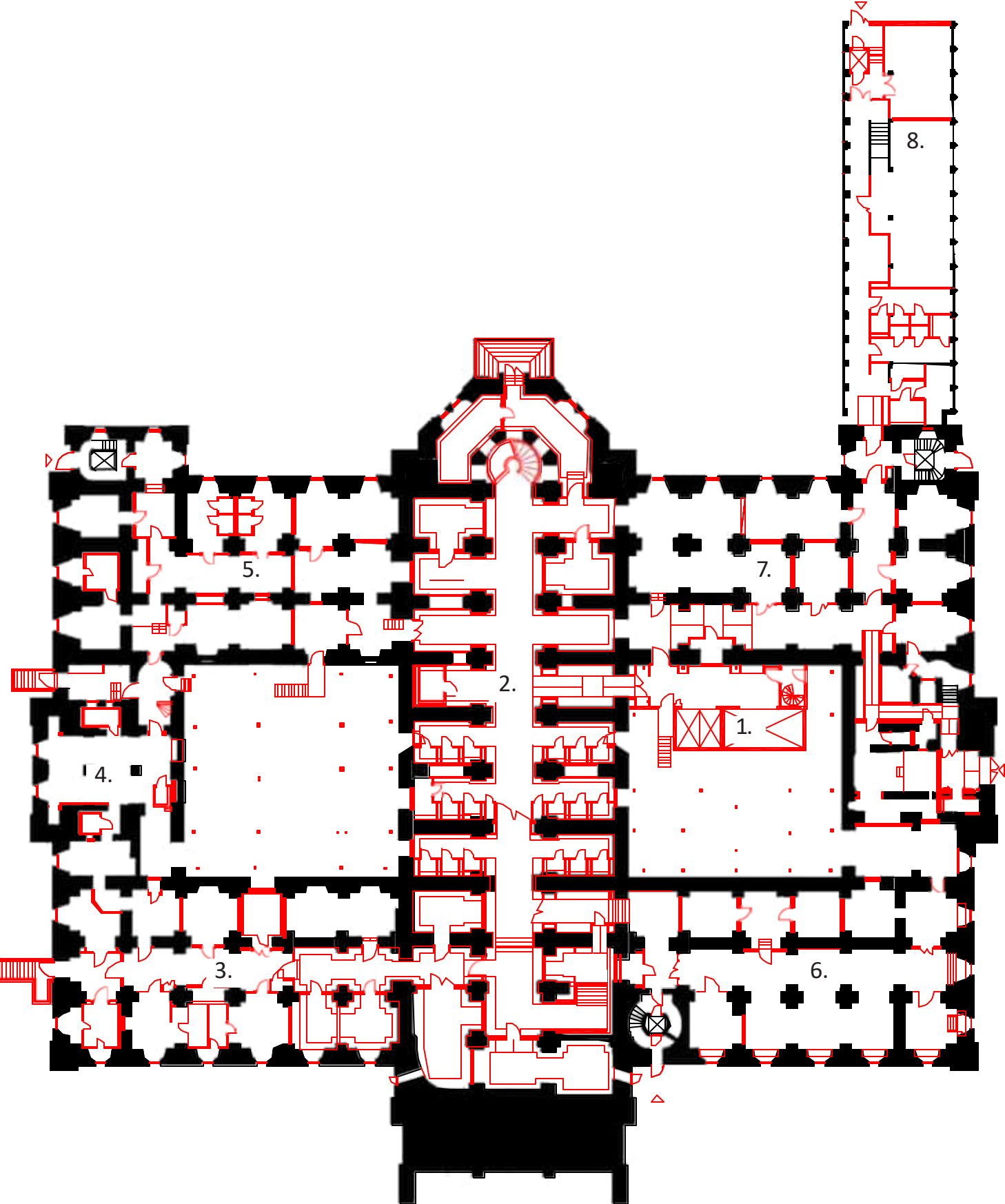
Achieving all these enhancements with respectful consideration for the building's architecture and cultural historical value.

Changes:
existing/refurbished - **new**

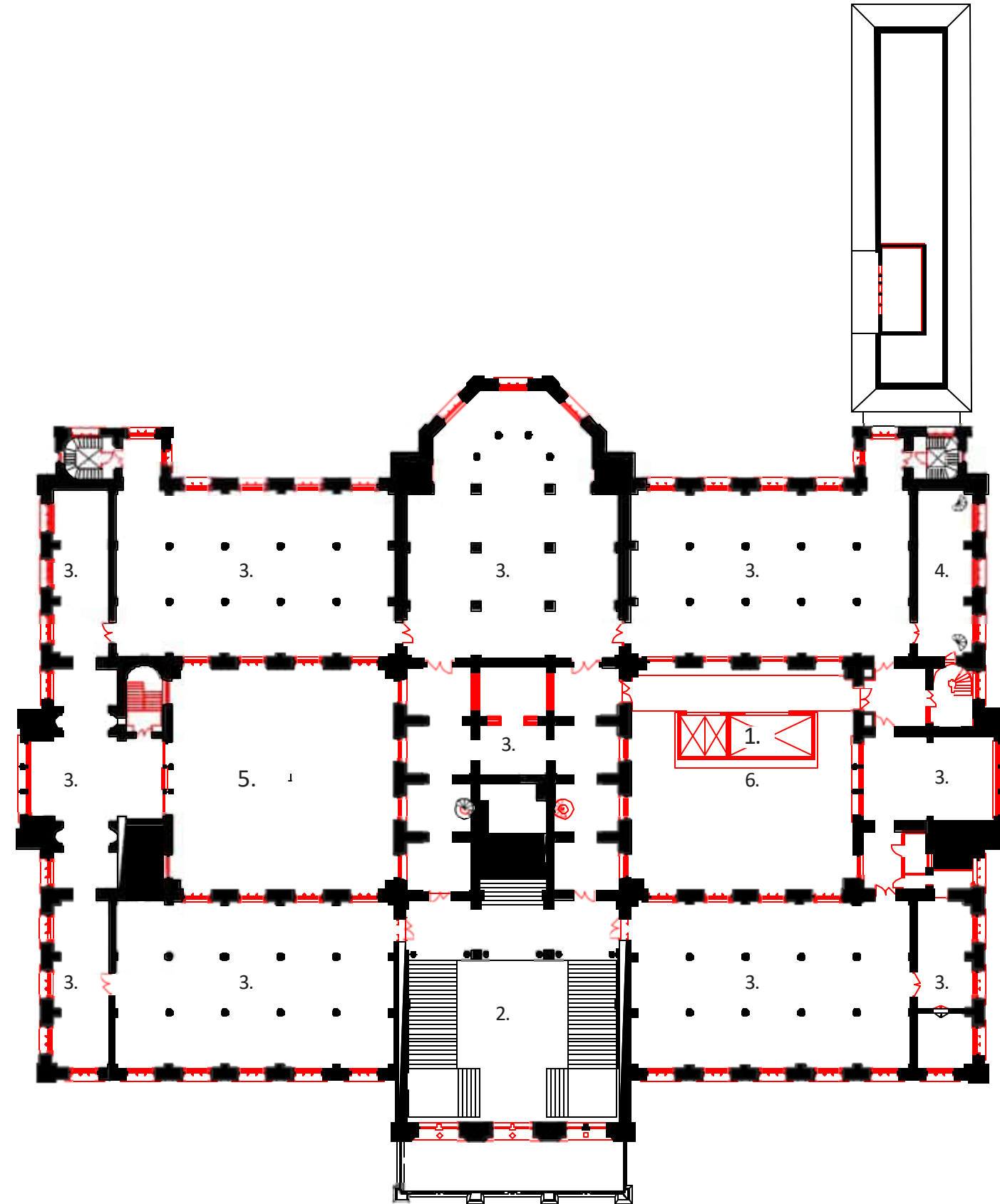
Entrance floor



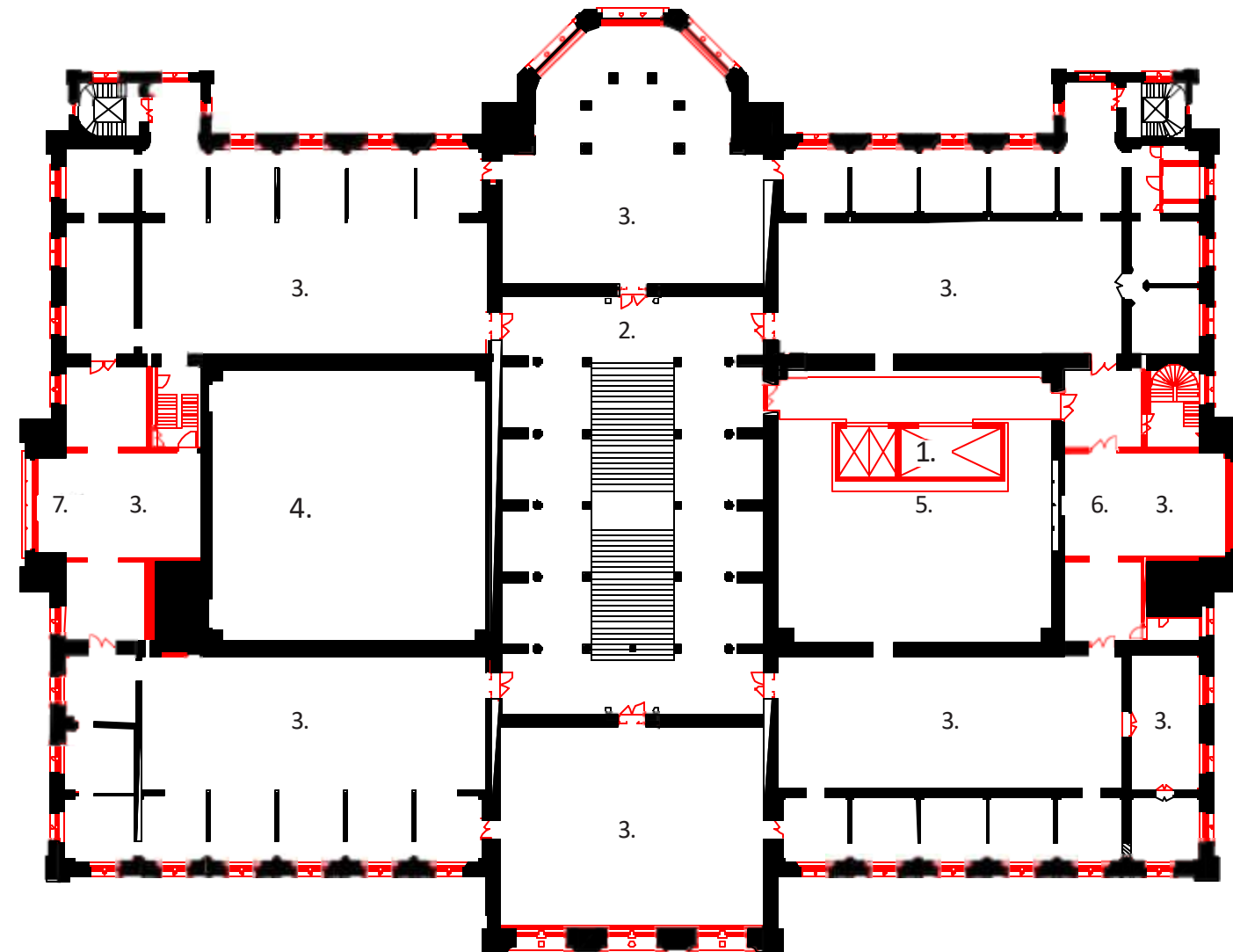
Basement



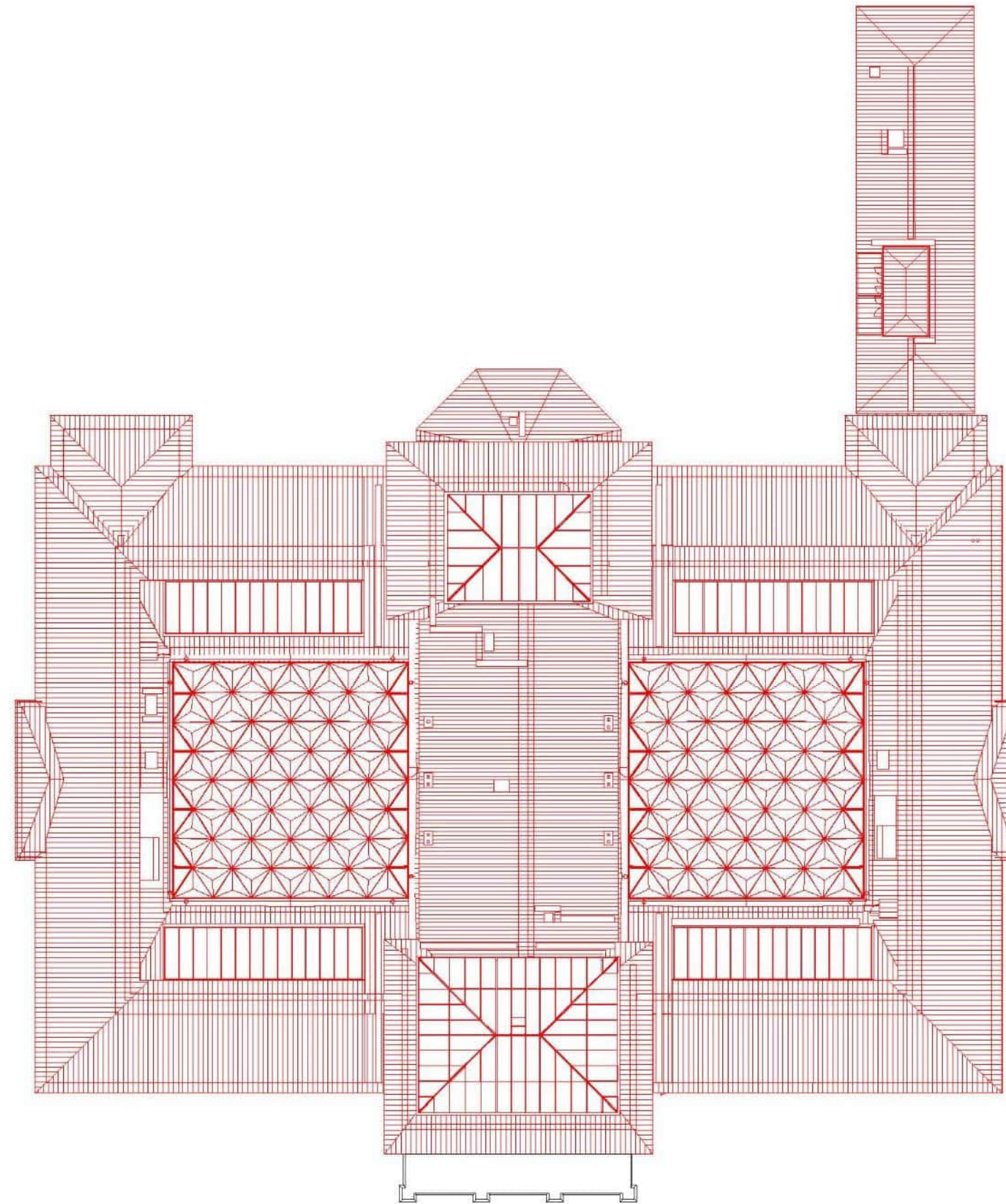
First floor



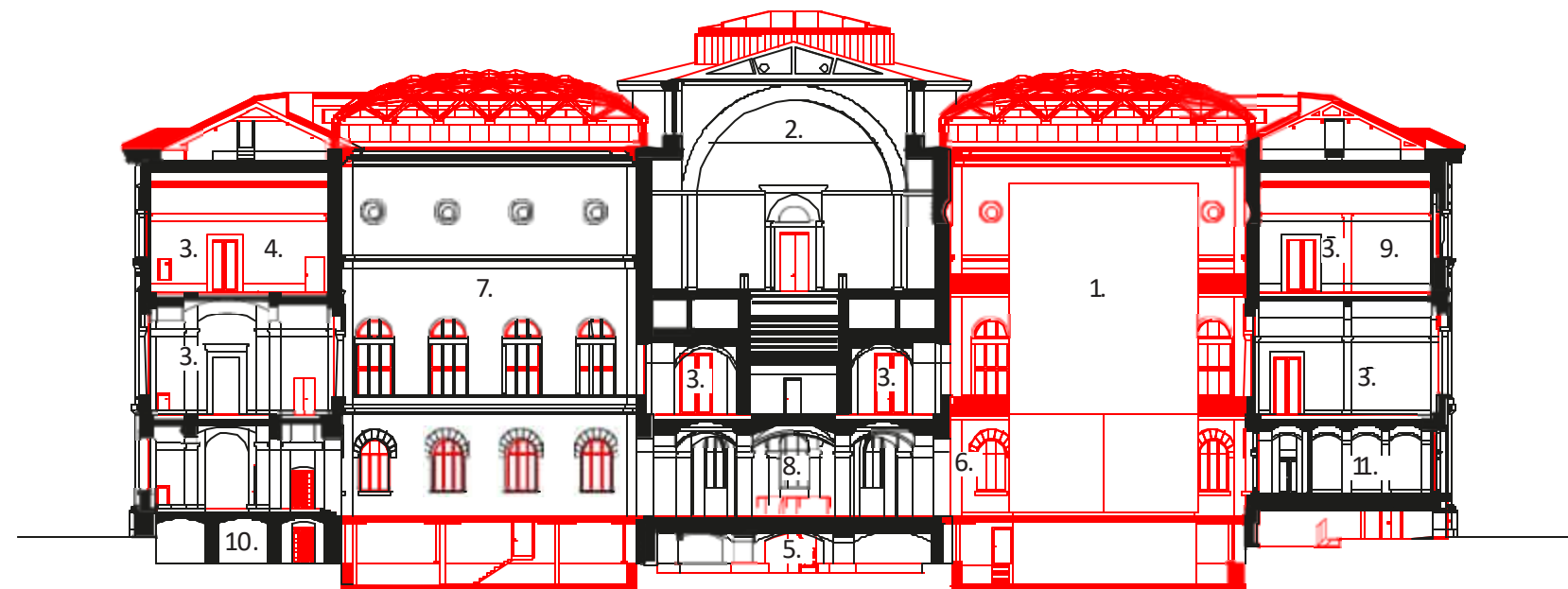
Top floor



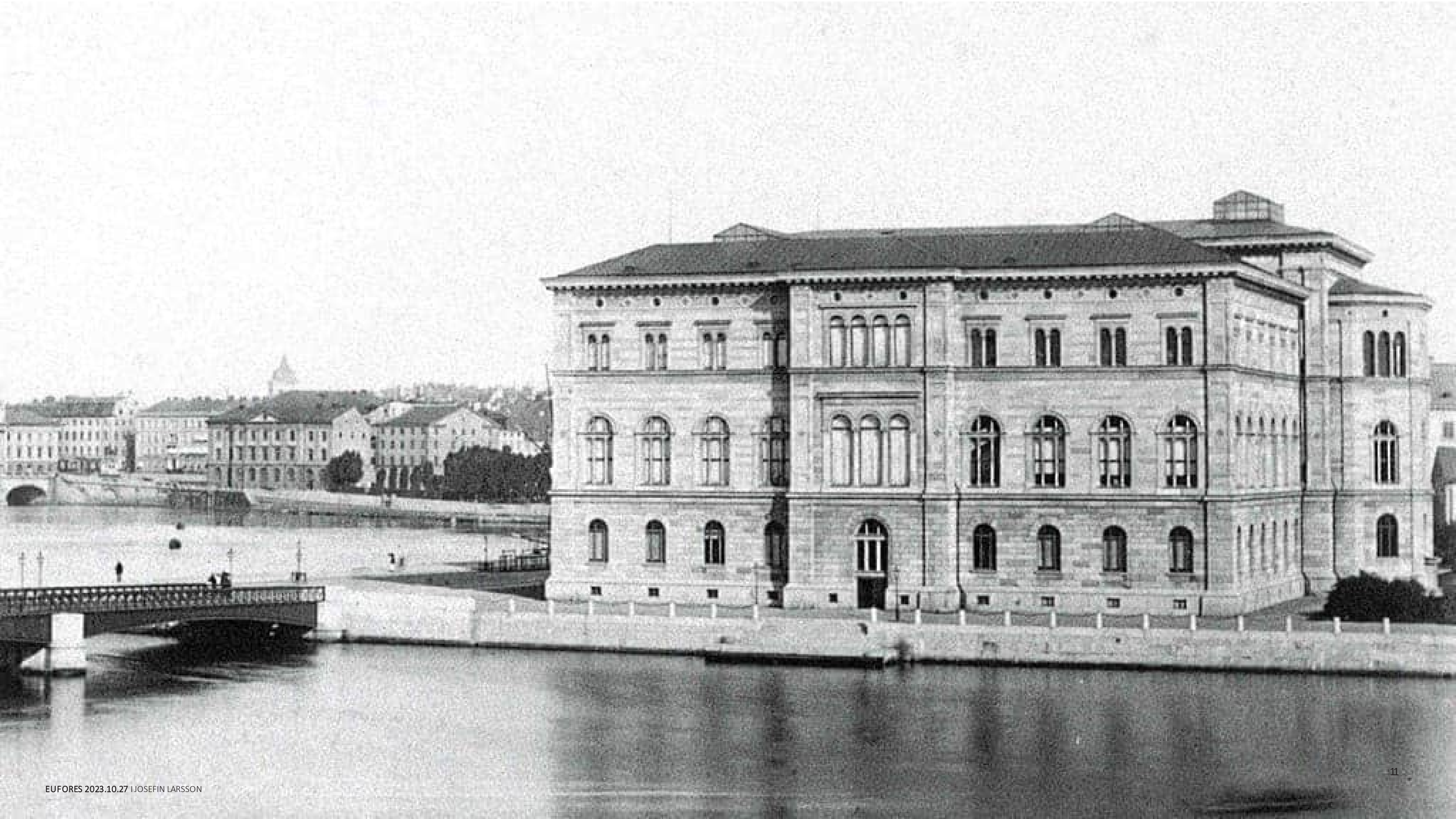
Roof

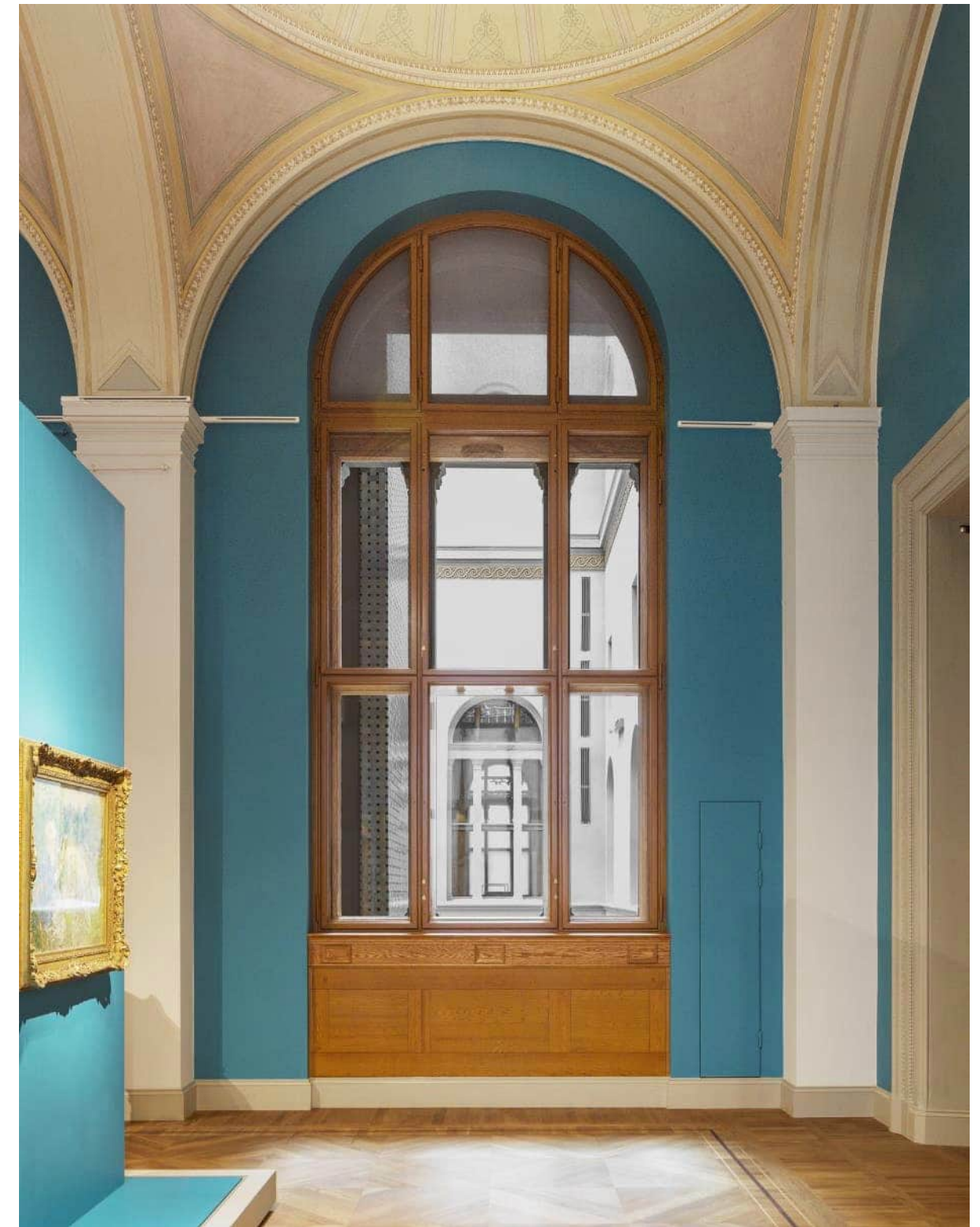


Section

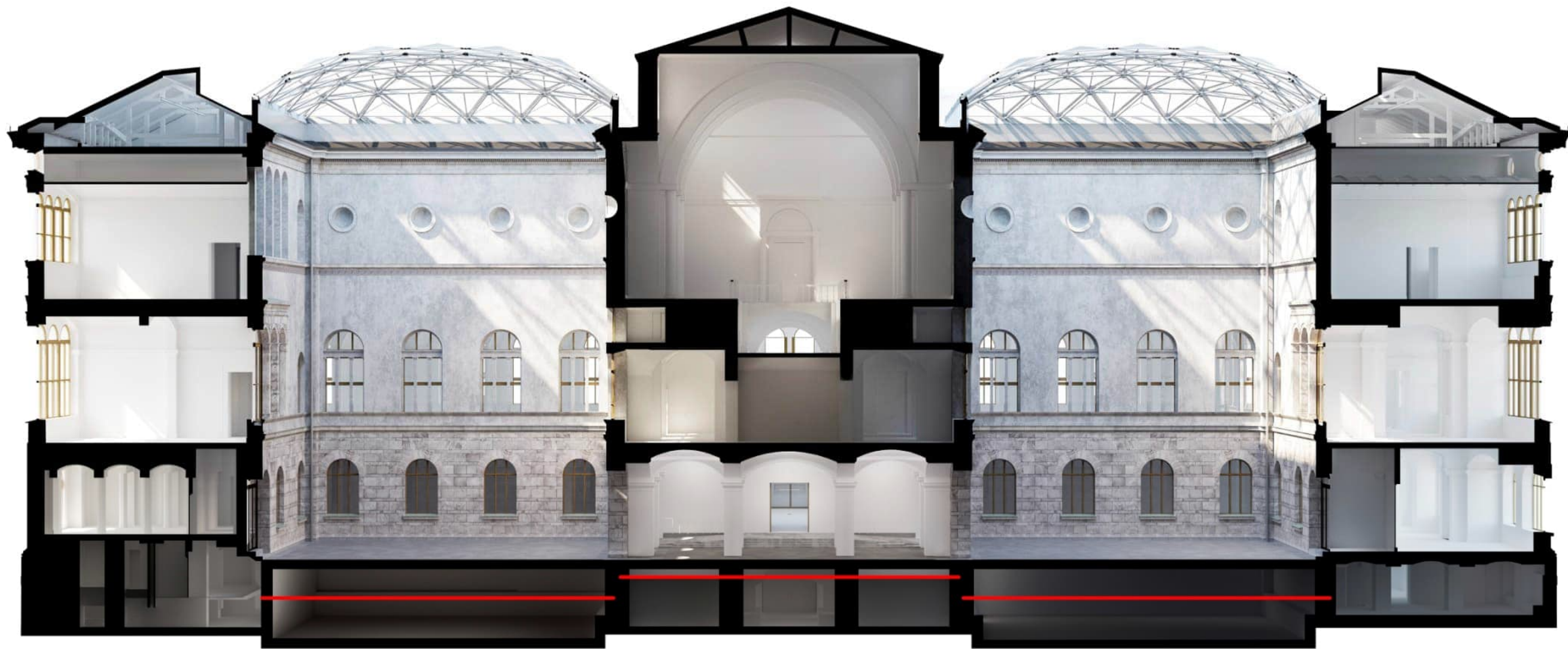


Reclaiming daylight



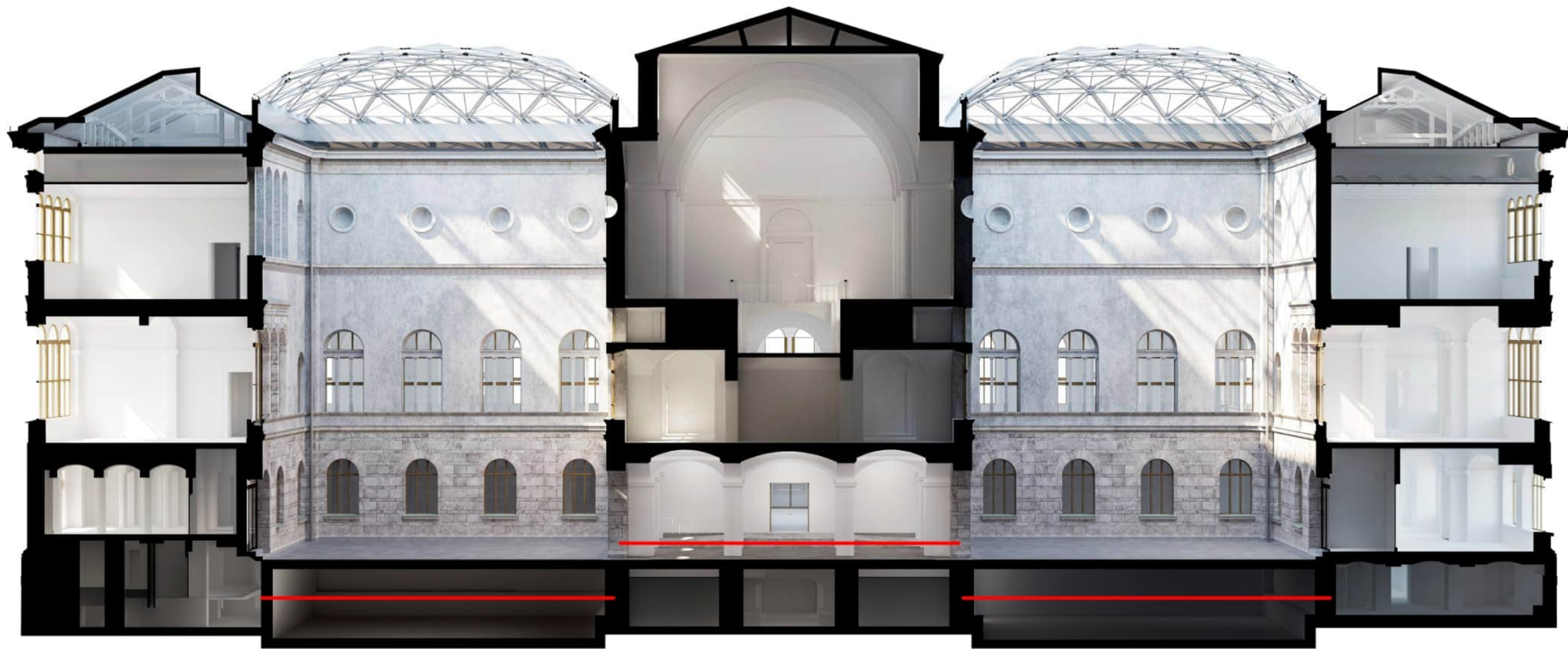


Optimizing space and logistics



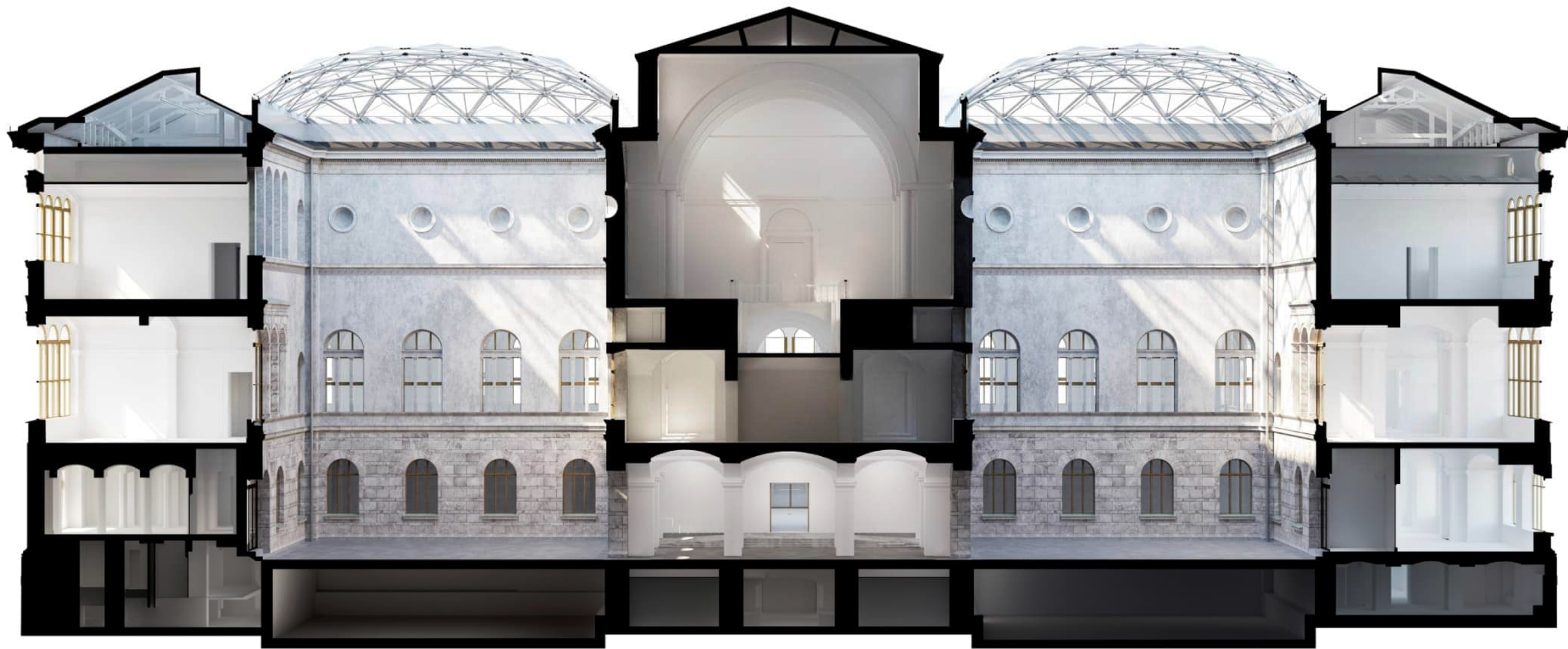
1866-1962

BILD: WINGÄRDHS



1962-2013

BILD: WINGÄRDHS



2018

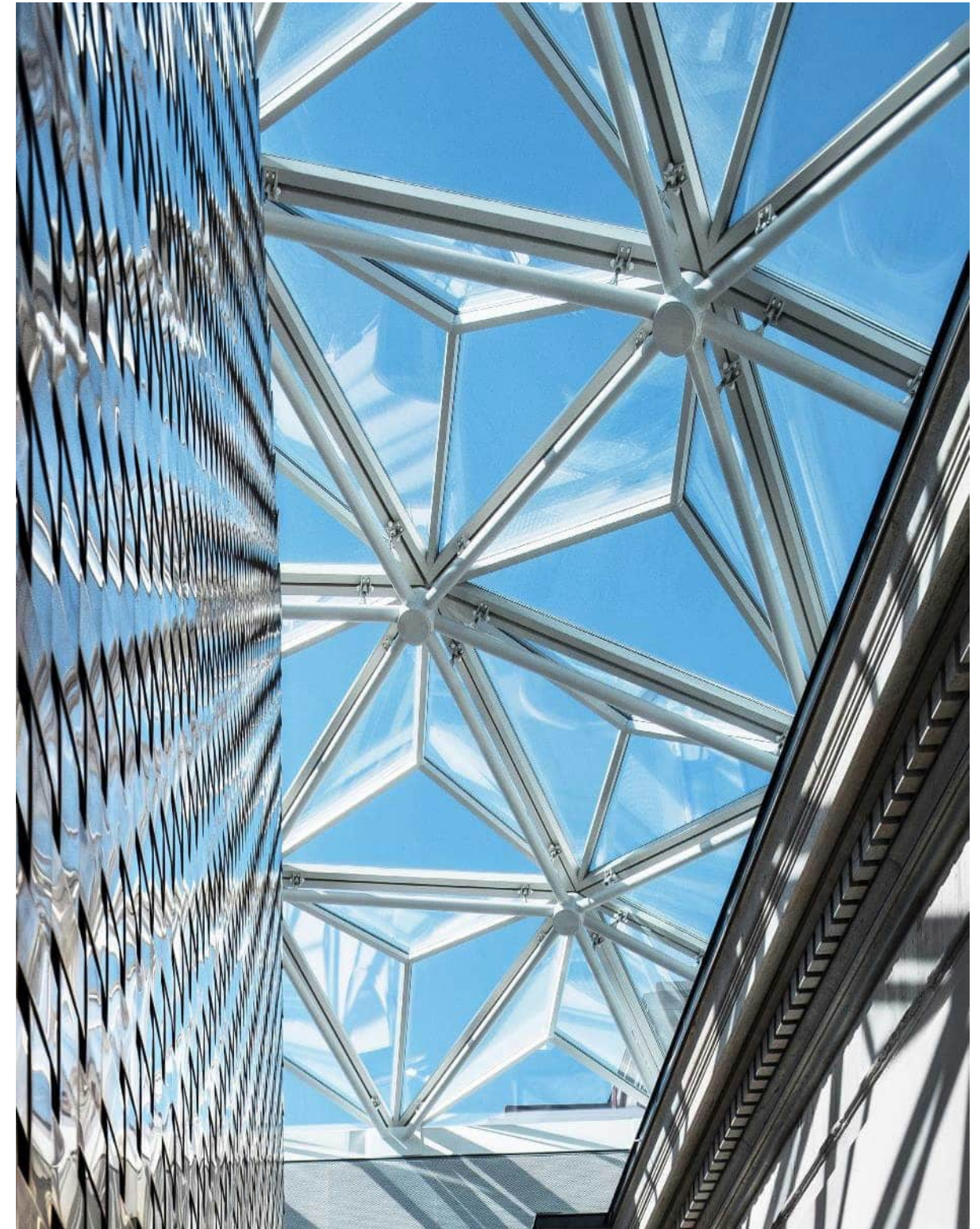
BILD: WINGÄRDHS

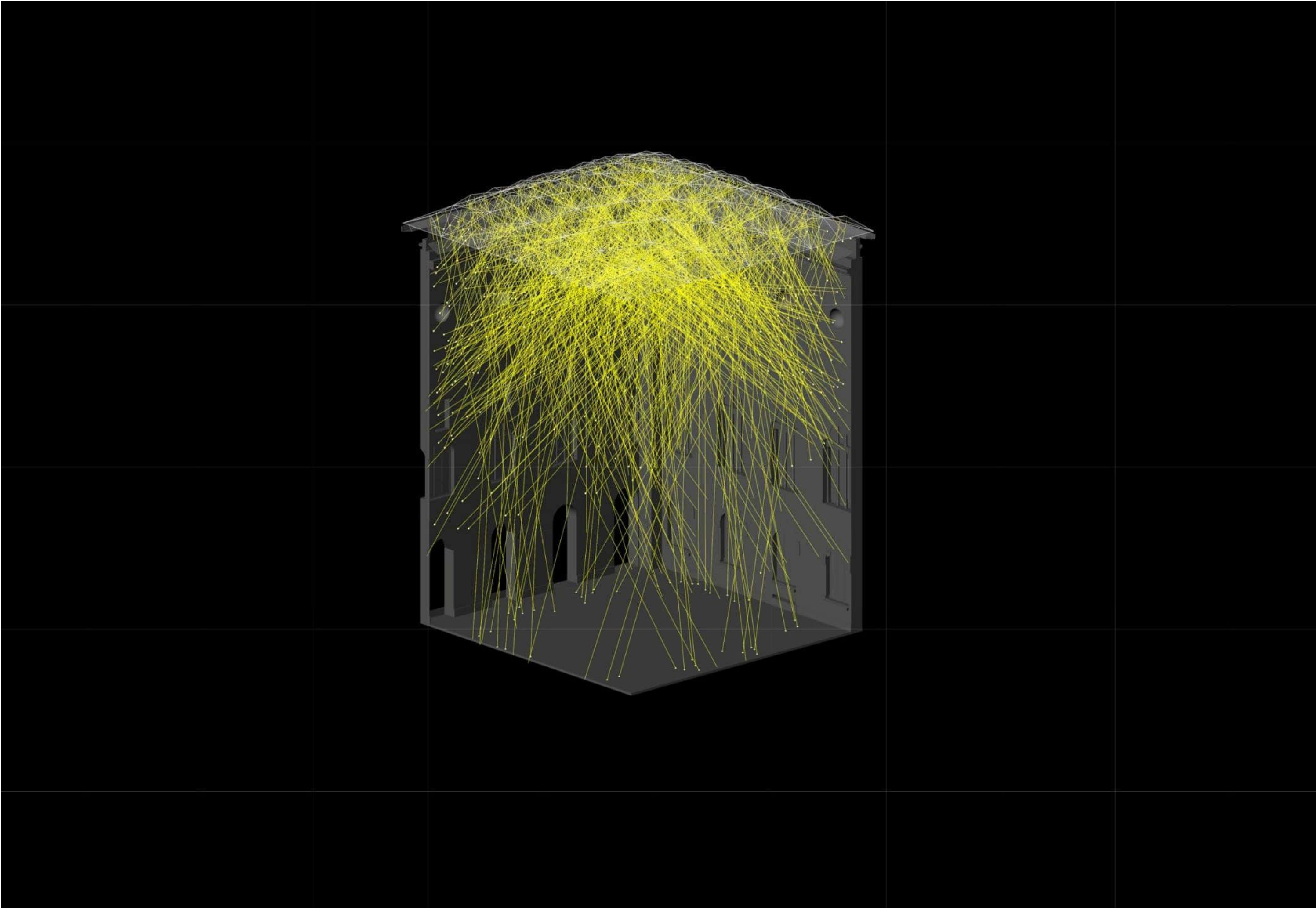


BILDFORS 2023 10 27 MONTEN LARSSON

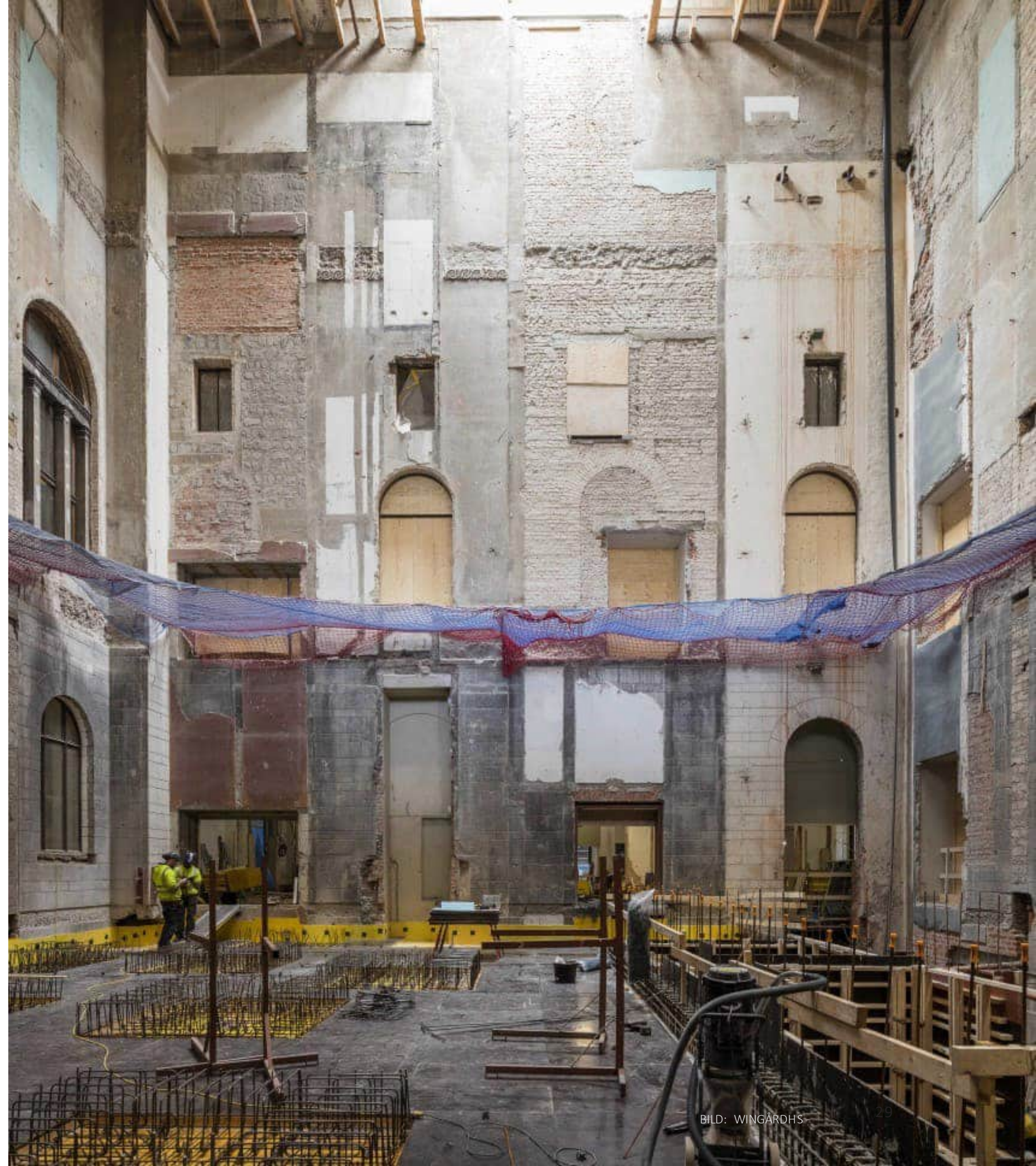
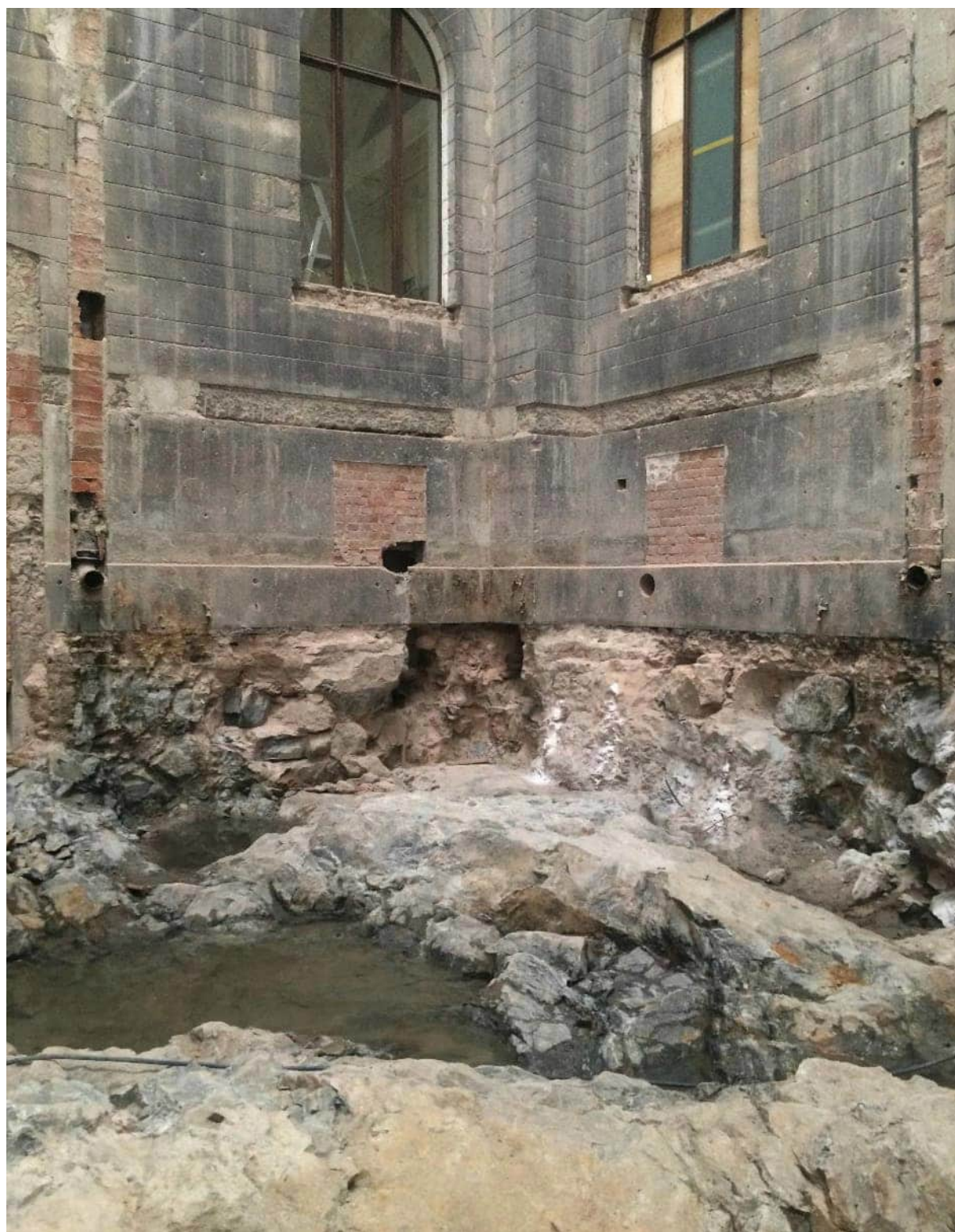


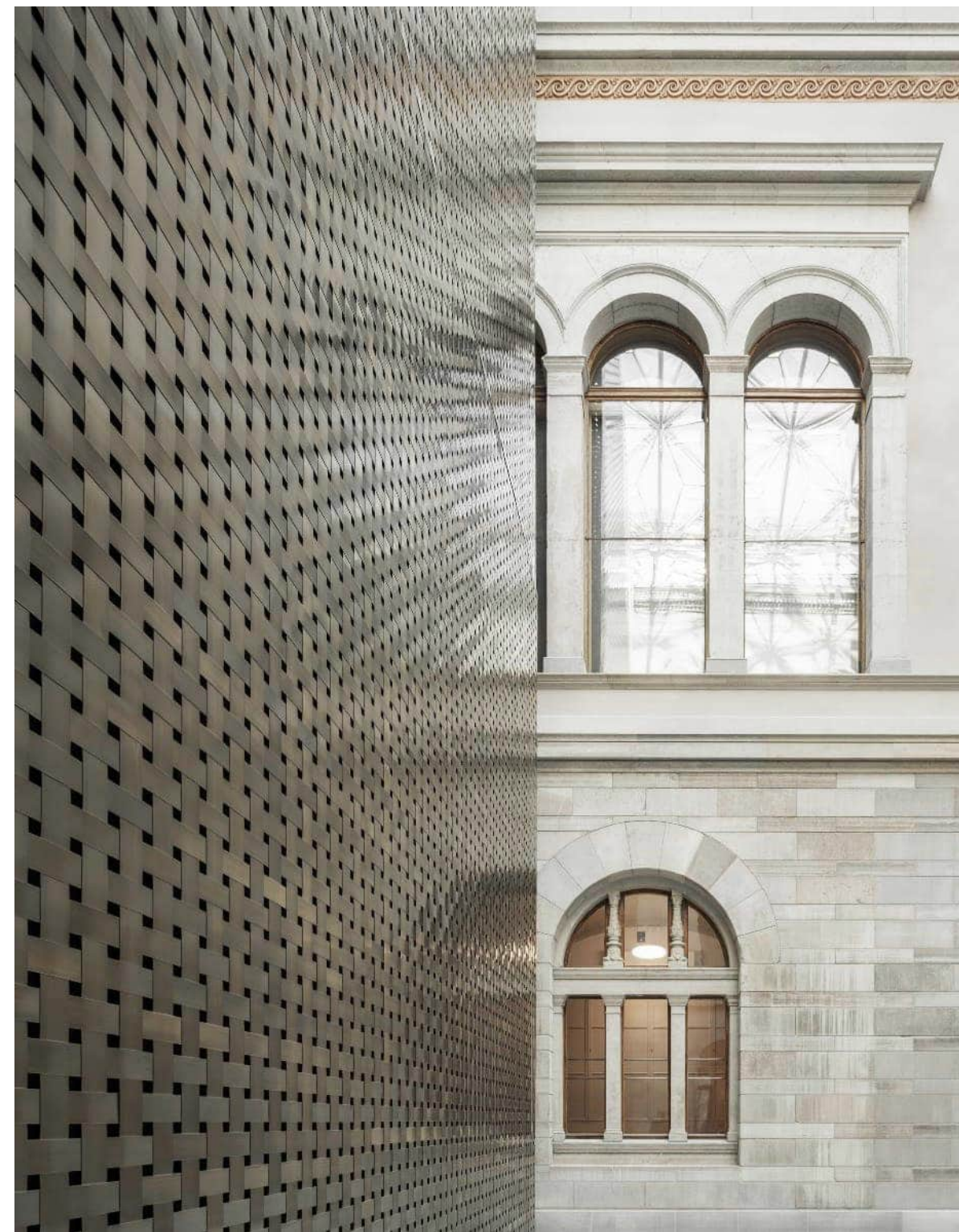
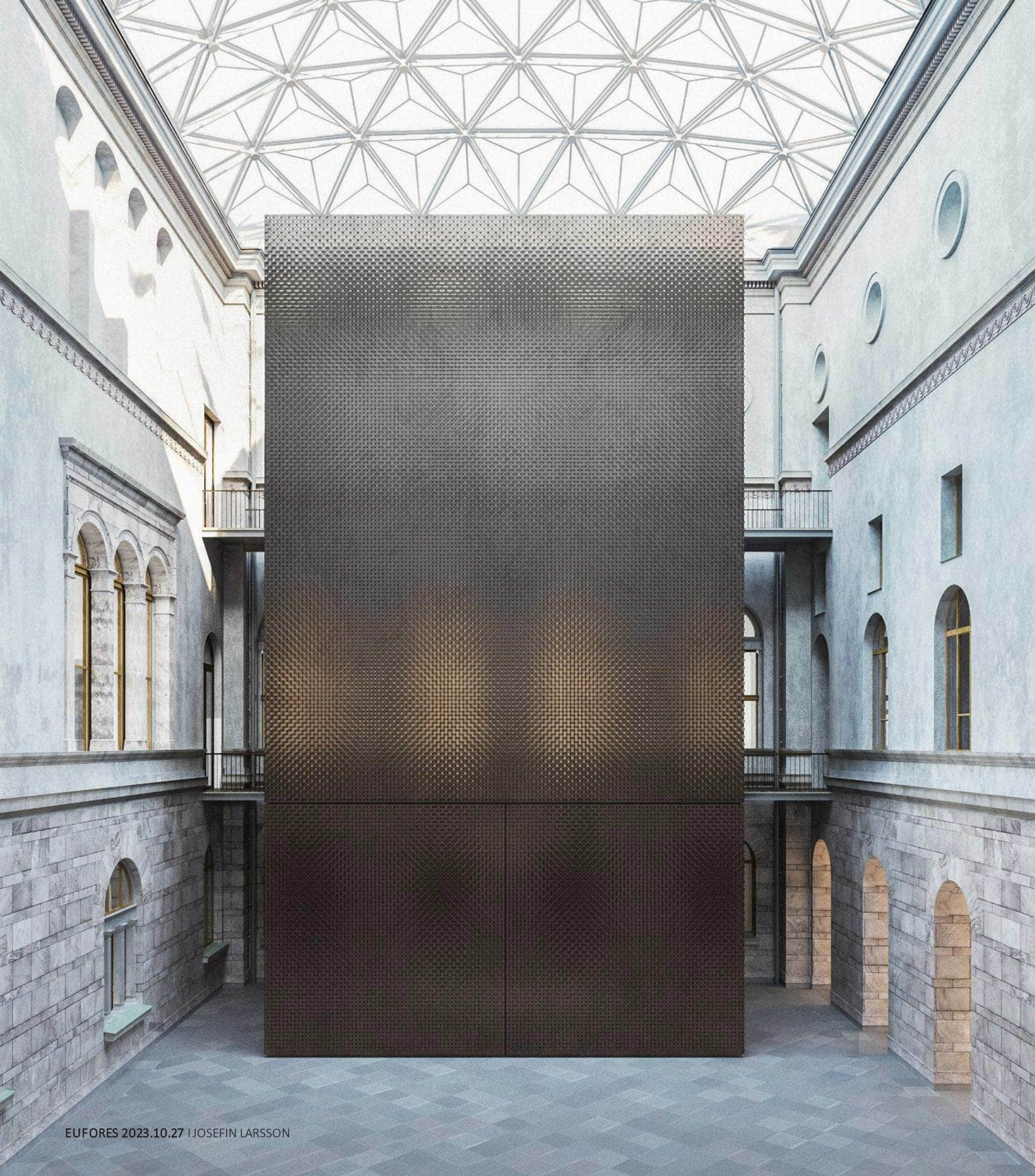
BILD: WINGÅRDHS

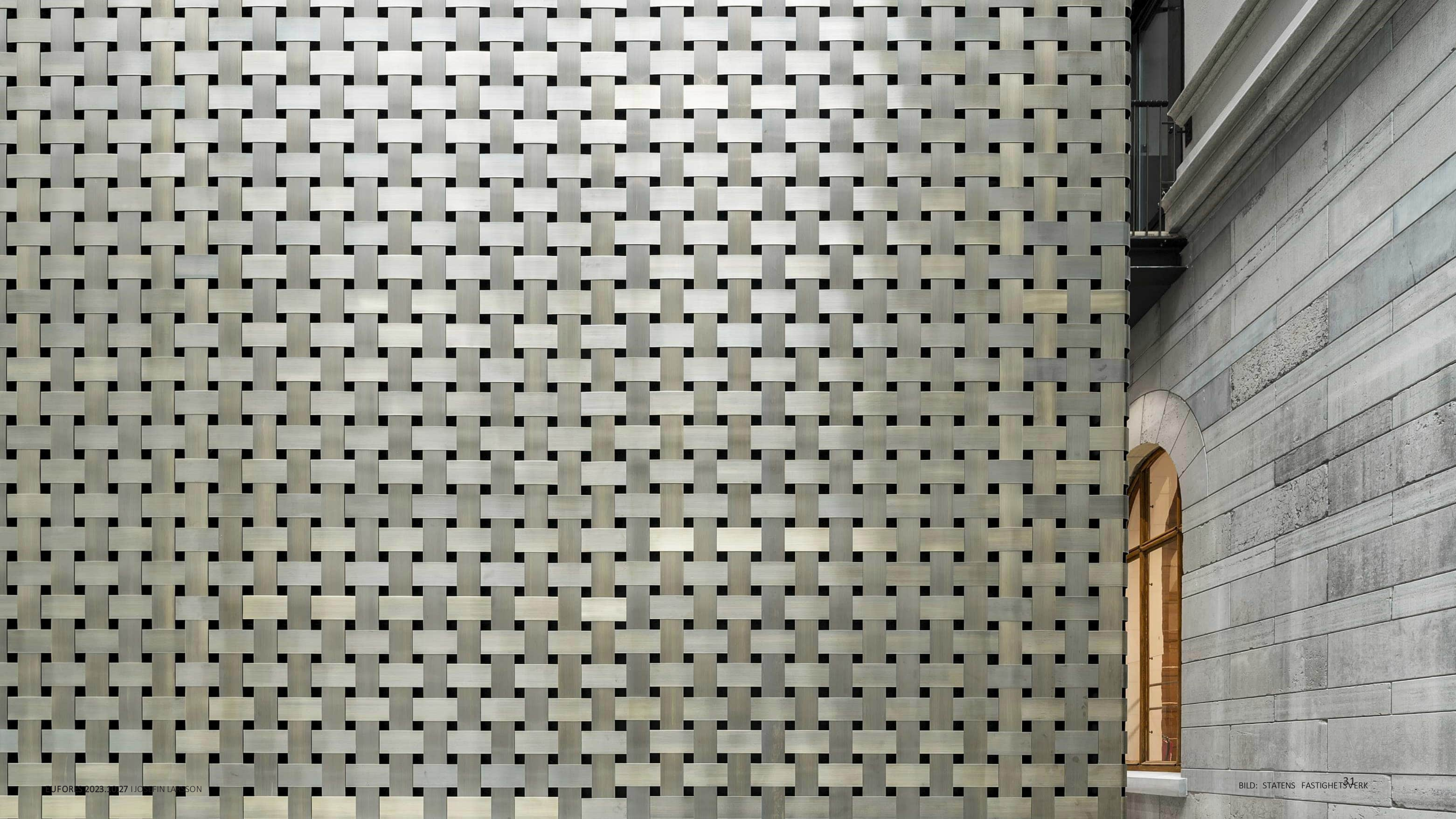




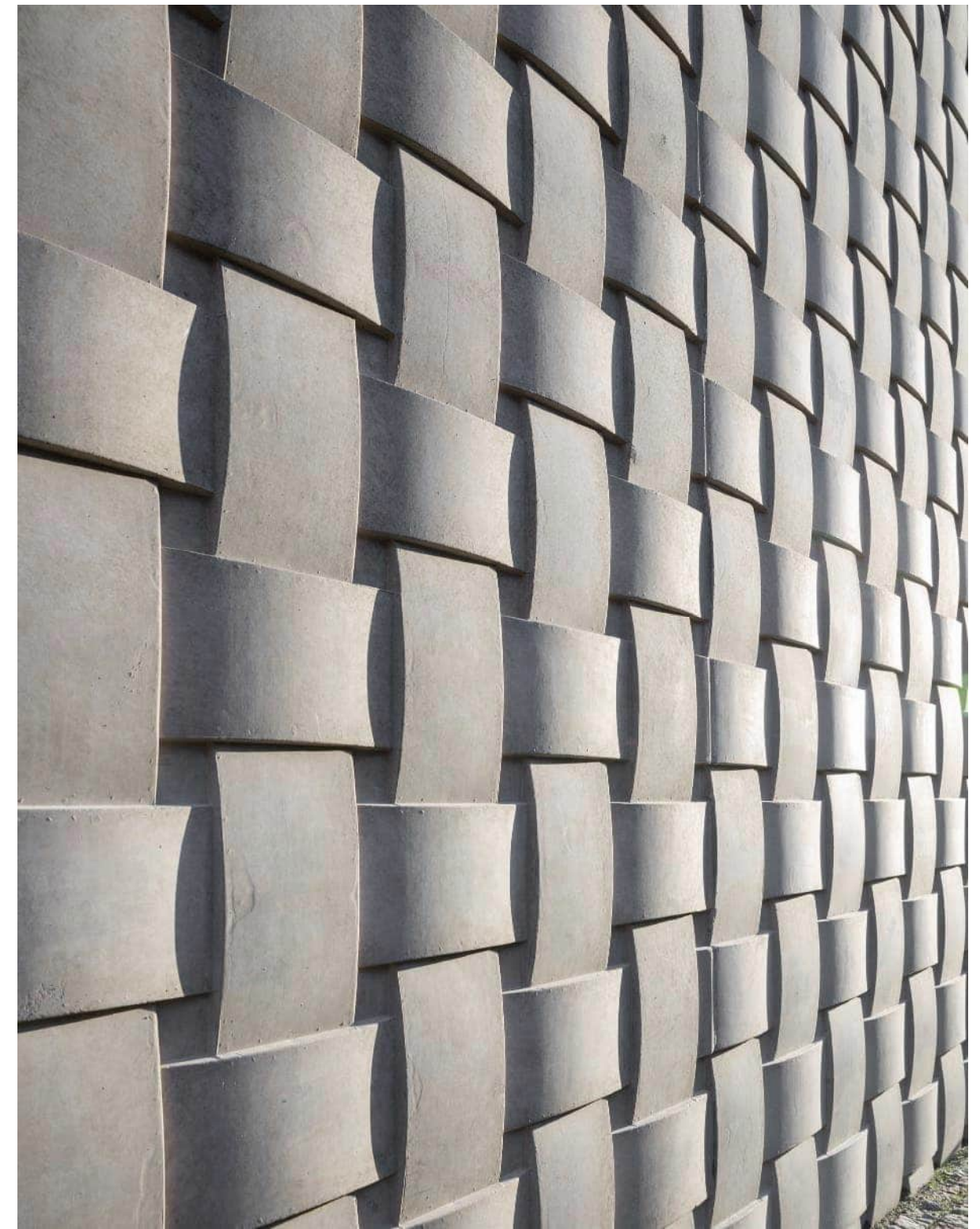


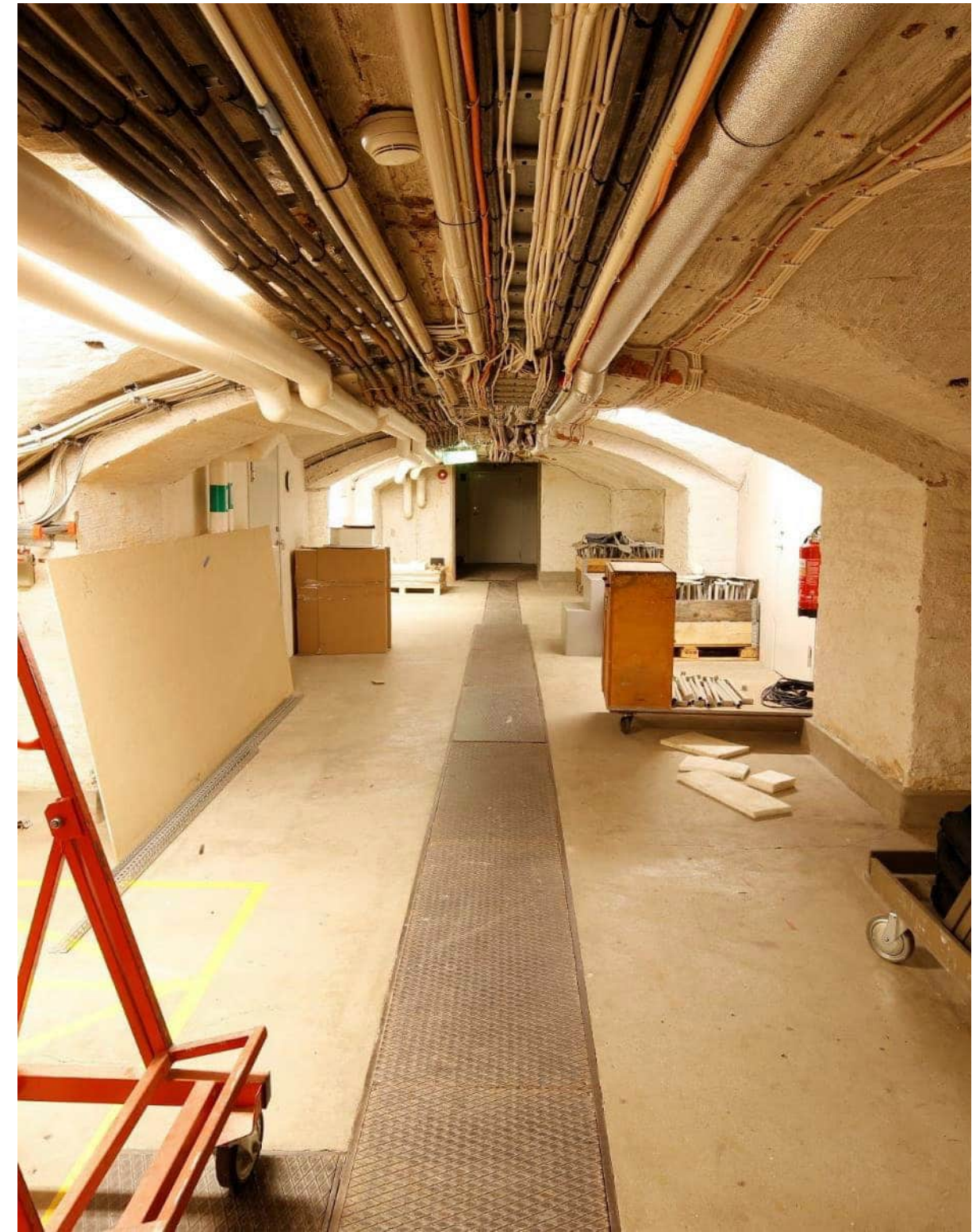


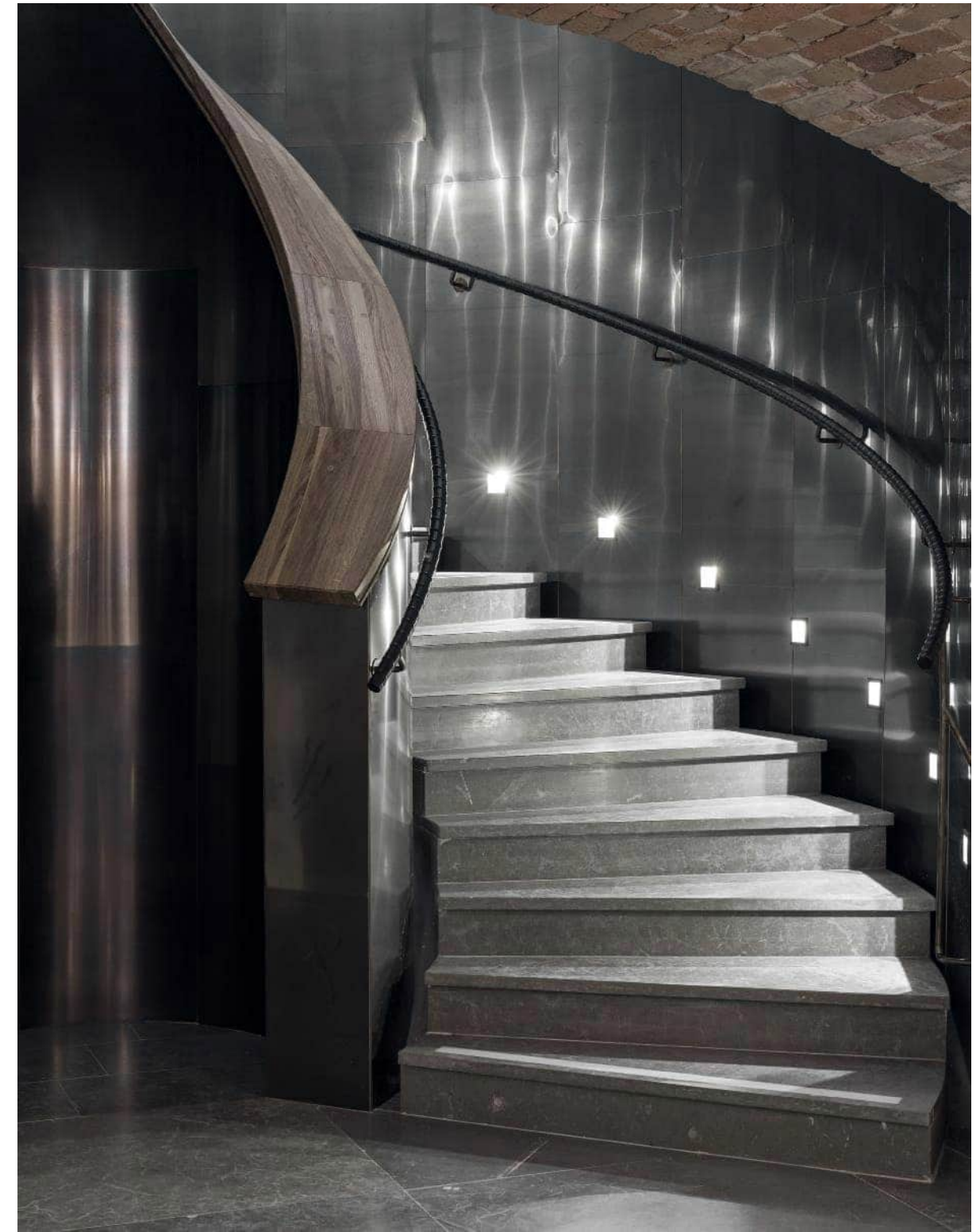












Improvement of technical systems







BILD: WINGÄRDHS

Our work with Nationalmuseum has balanced between identifying self-evident opportunities and discovering unexpected ones, where the self-evident dominated the design.

The main part of our work has been to ensure we meet the new technical and operational requirements while remaining true to the building's own inherent qualities.

Sustainability

Existing building certification systems did not apply for old/heritage buildings or museums

Green Building certification (the use of energy at a level 25% lower than the mandatory Swedish standard rules)

A thorough follow up on all building materials used, 93% of 1 318 materials are checked and registered

Aiming for disposed materials 5%, fall out ended up being 0,3%

Materials used have a long life span, mainly lime stone, wood and brass (already existing), concrete and steel were used for structural and safety reasons only

The copper roof has a local purification system in the museum park

Removed building parts are stored and will be re-used

Sustainability

Working environmental issues detected early by reporting risk observations, not only accidents

Focus on children with special picnic rooms for schools and families

Adding new spaces for people to meet and mingle

Accessible entrance with new outside and inside elevators and ramps

Acoustic measures, where it is possible, to provide better sound environment

